

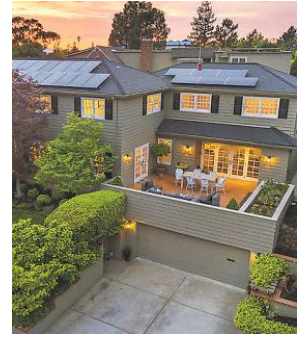
Real Estate

Sound Off:
How do you keep morale up when outbid? **M2**

SAN FRANCISCO CHRONICLE AND SFCHRONICLE.COM | Sunday, May 17, 2020 WB/PN

Making a home with harmony

Designer David Mast innovates craft for two decades **M4**



Open Homes Photography

Price Point

Piedmont Colonial comes fully equipped with a vast wealth of technological upgrades.

M3



Pendry Residences Natirar

Getaway

The Pendry Natirar occupies more than 400 acres and boasts room for equestrian activities.

N1

San Francisco-based interior designer David Mast purchased the Clocktower Building and renovated the penthouse, adding shelving and contemporary furniture to complement the industrial aesthetic.

David Mast



Tour Virtually. Move In Quickly.

Move-In Ready Homes • Point Richmond • Livermore • Brentwood • Mountain House • Tracy Hills • Fremont

Sales: Shea Homes Marketing Company (CalDRE #01378646); Construction: Shea Homes Limited Partnership (CSLB #855368). Equal Housing Opportunity.

Shea
HOMES®

866-OWN-SHEA

SheaHomes.com/BayArea

Open Homes

SAN FRANCISCO CHRONICLE AND SFCHRONICLE.COM | Sunday, May 17, 2020

GETAWAY

Homes to be built upon Pendry Natirar's pastoral landscape

By Jordan Guinn

New Jersey's reputation as The Garden State takes center stage at the Pendry Residences Natirar, a collection of 24 soon-to-be-built luxurious homes overlooking the resort's pastoral landscape that includes a 12-acre farm.

"We are presenting a residential resort lifestyle within a private gated enclave — a luxury experience that doesn't yet exist in New Jersey," said Robert Wojtowicz, founder, Natirar. "Pendry Residences Natirar will provide owners their own customized experience, with the ability to immerse themselves in a community *Pendry Natirar continues on N3*

Pendry Residences Natirar

Address: 2 Main St., Gladstone, New Jersey, 07934.

Features: Situated on hundreds of wooded and pastoral acres, the Pendry Residences Natirar is an upscale resort where construction on 24 luxury residences has begun. Farm Villa residences will be delivered fully furnished and feature two bedrooms, roughly 2,400 square feet of living space and private access to the resort's farm. Meanwhile, Estate Villa residences provide buyers a semi-custom home-building experience for domiciles ranging in size from 3,600 to more than 4,000 square feet. The resort includes a restaurant, a sprawling Tudor mansion and a cooking school.



Pendry Residences Natirar

This rendering showcases the contemporary design, thoughtful built-ins and open floor plans that will accompany homes within the Pendry Residences Natirar in New Jersey.

GETAWAY

Pendry Natirar from page N1

focused on sustainable living, wellness and connection to nature — all accompanied by the personalized services and amenities of the Pendry Hotels & Resorts brand.”

Once owned by the king of Morocco and situated among 400 bucolic acres, Natirar resides in New Jersey’s Somerset Hills. The estate’s historic Tudor mansion will be restored and renovated with an adjoining Pendry hotel, along with 24 new homes — all to debut next year.

Roughly 30 minutes from Newark Liberty International Airport, Natirar is about 90 minutes from Philadelphia and about an hour from New York City. The resort includes the acclaimed 90 Acres restaurant, along with a cooking school set within a restored carriage house. There’s also a 12-acre farm and the restored



Pendry Residences Natirar

The Farm Villa neighborhood at Pendry Residences Natirar will offer fully-furnished, two-bedroom, 2,400-square-foot homes with private access to the resort’s 12-acre farm.

mansion can host galas, weddings and other large celebrations.

The 24 homes will be divided among a series of neigh-

borhoods and enclaves. Farm Villa residences will be delivered fully furnished and feature two bedrooms, roughly 2,400 square feet of living

space and private access to the resort’s farm. Meanwhile, Estate Villa residences provide buyers a semi-custom homebuilding experience for

domiciles ranging in size from 3,600 to more than 4,000 square feet.

“Pendry Residences Natirar will be the ideal retreat for those looking for a turn-key second home outside of the city—all with personalized service, design and all the custom attributes that appeal to individual families,” said Tina Necrason, executive vice president, residential, Montage International. “Pendry Natirar is poised to offer residents a vibrant gathering place for countless memories to be made. The farm, amongst many amenities, will be one of the unique attributes of the Natirar wellness experience and allow owners to connect directly to the land.”

Learn more at www.pendryresidencesnatirar.com.

Contact: Pendry Residences Natirar, inquiry@pendryresidencesnatirar.com.

OPEN HOMES GUIDE VISIT SFGATE.COM/REALESTATE

SAN FRANCISCO

Financial District \$1,888,888 333 Bush Street, Open Sunday by private appointment and virtually. Stunning city, water and bridge views from this corner 2bd/2ba condo. **Mary Fenton, Levels Real Estate** dre#01265968 415-205-5218

Telegraph Hill \$649,950 101 & 240 Lombard Street Open Sunday by appointment & virtually From \$649,950 to \$1,650,000 we have multiple move in ready condos to show & sell. **Mary Fenton, Levels Real Estate** dre#01265968 415-205-5218

ALAMEDA COUNTY EXCLUDING OAKLAND/BERKELEY

Albany, \$599,000, 535 Pierce St. #1317, By Appointment. Rare top floor South facing 2bd/2ba condo w/ great light vaulted ceilings, fireplace, private balcony, in-unit laundry and gated parking spot. Amenities: swimming pool, hot tub, tennis courts, and gym. Near Pacific East Mall, EC Plaza, BART and Solano Ave. Albany Schools! www.535Pierce1317.com Tom Coble with Winkler Real Estate Group 510-915-1615

Piedmont \$3,195,000 110 York Dr. Call for Information Magical Traditional boasting a seamless indoor/outdoor experience. Generous private master suite. Wonderful outdoor patio, balcony & garden. **ANNE FESTE** #01265201 510-757-4787

THE GRUBB Co.

ALAMEDA COUNTY EXCLUDING OAKLAND/BERKELEY

Piedmont \$3,200,000 3 Requa Place Call for Information



THE GRUBB Co.

Glamorous Mid-Century traditional on a quiet cul-de-sac in the center of town with a “regency” flavor. Extra spacious rooms throughout and peek-of-the-Bay. Good separation of space. Large rumpus downstairs, lovely patios & gardens. **ANIAN PETTIT TUNNEY#00812754 ADRIENNE KRUMINS#01296734 510-928-7447**

Piedmont \$3,695,000 151 Hazel Ln Call for Information Dreaming of more space? Prominent Colonial on premier private lane offers except livability. See the extensive renovations, video, fir pln at 151Hazel.com **JANE STRAUCH#01474232 510-388-6841**

THE GRUBB Co.

DATEBOOK
SAN FRANCISCO CHRONICLE
DATEBOOK.SFCHRONICLE.COM

ALAMEDA COUNTY EXCLUDING OAKLAND/BERKELEY

Piedmont \$6,800,000 40 Lincoln Ave Call for Information



THE GRUBB Co.

This magnificent Albert Farr designed Mediterranean Villa is a uniquely private residence located in one of Piedmont’s most coveted neighborhoods. Cited on almost half an acre this timeless and sophisticated home offers chic interiors and beautifully manicured grounds. **ANIAN PETTIT TUNNEY#00812754/ADRIENNE KRUMINS#01296734 510-928-7447**

BERKELEY

Berkeley \$1,399,000 1829 Bancroft Way Call for Information 4BR/3BA Central Berkeley Home. 1829Bancroft.com **COLLEEN LARKIN #00874780 510-816-2507**

THE GRUBB Co.

San Francisco Chronicle
UPGRADE YOUR INBOX
SFGCHRONICLE.COM/NEWSLETTERS

BERKELEY

Berkeley \$1,595,000 1634 McGee Ave Call for Information 3BR/1.5BA North Berkeley Traditional. 1634McGee.com **COLLEEN LARKIN #00874780 510-816-2507**

THE GRUBB Co.

Berkeley \$3,900,000 636 Wildcat Canyon Call for Information



THE GRUBB Co.

An exceptional compound with 2 architect designed homes on 2 separate parcels joined by a private drive with panoramic views of the Tilden Park hills and maximum privacy. An unparalleled oasis! **BEBE MCRAE #00875159/ALEXIS THOMPSON #01849227 510-928-3912**

DATEBOOK
SAN FRANCISCO CHRONICLE
Your guide to Bay Area arts & entertainment
DATEBOOK.SFCHRONICLE.COM