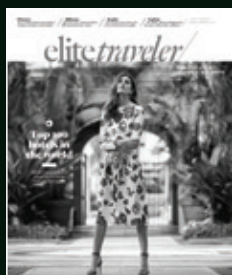


elite traveler

RESPONSIBLE LUXURY LIFESTYLE

SUMMER 2021



Anniversary Issue



The Lion Heart compound at Oil Nut Bay in the BVI



Bahías Residences Peninsula Papagayo is an exclusive collection of just 13 family compounds

Real Estate

WITH A FOCUS ON EXCEPTIONAL PROPERTIES IN THE US, AMERICAS AND CARIBBEAN, THIS ISSUE'S REAL ESTATE OFFERINGS INCLUDE THE REBIRTH OF AN ICON IN NEW YORK CITY AND AN OUTSTANDING COMPOUND IN THE BVI.
BY SAMANTHA COLES

Oil Nut Bay British Virgin Islands

Located on the eastern tip of Virgin Gorda in the North Sound region of the British Virgin Islands (home to Necker and Mosquito islands), Oil Nut Bay is an island resort spread across 400 flourishing acres. Accessible only by boat or helicopter, the secluded spot has the azure waters of the Caribbean Sea on one side and the Atlantic Ocean on the other. The turnkey residences are custom-built into the island's lush topography — some even have 'green roofs,' which allow the properties to blend seamlessly into their surroundings. The Lion Heart compound comprises two furnished villas known as Halo and Rainbow, and sits among 12 acres of undulating terrain brimming with flora and fauna. Halo covers over 8,000 sq ft and has five bedrooms, six full and one half bathroom, a gym, dining room with space for 12 guests and an infinity pool. Rainbow is an additional villa within the compound, built as a guest residence (the compound can accommodate up to four additional guest villas). It has a spacious great room, master bedroom with his 'n' her closets, laundry room, gym, outdoor shower, dining terrace and infinity-edge pool.

\$39.5m. Contact Shaylene Todd, sales and marketing director, info@oilnutbay.com, +1 800 761 0377, oilnutbay.com

Bahías Residences by Antoine Predock Costa Rica

The Peninsula Papagayo in Costa Rica is a wonderland of lush, natural terrain and a mecca for adventure enthusiasts. This new development by Antoine Predock, a celebrated American architect who holds the coveted AIA Gold Medalist status (the institute's highest award), describes architecture itself as an adventure, "a fascinating journey toward the unexpected." Set on 17 acres on one of the peninsula's highest points overlooking islands, serene bays and protected wildlands, Bahías Residences Peninsula Papagayo is an exclusive collection of just 13 family compounds. Each residence rises up from the bluffs, suspended in the forest canopy some 250 ft above the Pacific Ocean. As you'd expect, each residence's design is exceptional with 'transparent walls' bringing indoor/outdoor living to new heights. Each sits on up to two acres with between 8,500 sq ft to 10,500 sq ft of indoor and outdoor space. The homes offer two or three levels and have infinity pools, spas and 'glamping rooms.'

From \$6m. Contact bahias@peninsulapapagayo.com, +506 269 621 26, peninsulapapagayo.com



The Strand is a collection of villas and residences in Turks & Caicos

The Strand Turks and Caicos

Set to debut later this year, The Strand is a limited collection of beachfront villas and custom residences. Located in the paradisaical Cooper Jack Bay Settlement, The Strand sits on a gentle slope and thus has dreamy views across the white sand beaches and sparkling waters of Turks and Caicos. The site also has 1,400 ft of canal and marina frontage, and residents have access to The Strand's own Club Boat's catamarans, kayaks and paddleboards. There is also a tennis court, two pickleball courts, a fitness center and yoga deck available for owners and guests. The largest and most lavish offering is the Grand Residence; it has six bedrooms, seven bathrooms and roughly 7,300 sq ft of enclosed space and 14,000 sq ft of indoor/outdoor living space. The main house has five oceanfront en-suite bedrooms, and there's a one-bedroom guest house on site too. The courtyard has a plunge pool and spa, outdoor kitchen and a family room.

From \$10m. Contact Thorn Capron, vice president of sales, +1 561 437 3313, thestrandtci.com

SPONSORED

Tribune Tower Residences Chicago, USA

Meticulously designed, Tribune Tower Residences offers one- to four-bedroom condominiums with 56 unique floor plans. Architectural elements create stunning residences while honoring the heritage of the historic building. Experience an unparalleled lifestyle near the city's finest restaurants, shopping, cultural destinations, beautiful Riverwalk and lakefront. Residents of Tribune Tower have access to four levels of unrivaled amenities including a luxury spa area, state-of-the-art fitness center, indoor pool, driving range simulator, and workspaces and entertainment areas with a bar and chef's kitchen. A private courtyard provides access to a residential outdoor oasis — a rare luxury in the city. The 25th-floor Crown Amenity has intimate seating and dining areas framed by the stunning original flying buttresses that afford 360-degree views of the city.

\$900,000 to \$7m. Contact Jeanne Martini, sales director, info@tribunetower.com, +1 312 967 3700, tribunetower.com

Tribune Towers' stunning architecture honors the historic building's heritage





Harvest Homes at Montage Residences Healdsburg come with custom wine storage

**Harvest Homes
Healdsburg, California, USA**

Located in Northern Sonoma County, Harvest Homes at Montage Residences Healdsburg is situated on 258 acres of rolling hills, complete with private vineyards and 22,000 carefully preserved oak trees. The Harvest Homes are a collection of residences within the resort (meaning you have access to all of Montage Healdsburg's amenities, including the exceptional 11,500-sq-ft spa and full-service salon). Each of the 25 homes are fully furnished and have four bedrooms, four-and-a-half bathrooms, custom integrated wine storage and over 4,500 sq ft of indoor/outdoor living space. Residents will also have access to special wine programs through the property's private vineyards and winemaker Jesse Katz of Aperture Cellars. Winemaking events, wine releases and private blends are all benefits reserved for homeowners — *à votre santé!*

From \$5.25m. Contact Curtis Tischler, founder, ctischler@ohanare.com, +1 949 395 0553, montageresidenceshealdsburg.com

**The Towers at Waldorf Astoria
New York City, USA**

An undisputed icon of the big apple's skyline, The Waldorf Astoria New York was built in 1931 and is undergoing a careful renovation which will give you the chance to make the historic Park Avenue landmark your permanent address. The Towers will be above the legendary hotel and will include 375 residences ranging from studios to penthouses. The amenities offered to residents are as vast as they are incredible: Grand Salon with library, billiards and games room with bar and lounge, private dining rooms, theater with stage and screen, private wine vaults and tasting room, demonstration kitchen, The Empire Club (a private workspace with board room, offices and co-working spaces), children's playroom, and an 82-ft swimming pool with lounge and bar. The first offerings are anticipated for early 2023.

From \$1.8m. Contact Dan Tubb, senior director of sales, +1 212 872 1200, waldorftowers.nyc



The Towers at Waldorf Astoria will sit above the iconic hotel



The Bentley Residences will be the tallest residential tower on a US beachfront



Bentley Residences Miami, USA

A partnership between real estate developer Dezer Development and needing-no-introduction Bentley Motors, the Bentley Residences will be the first ever Bentley-branded residential tower in the world. Soaring into the Sunny Isles Beach skyline at 749 ft and over 60 stories high, it will be the tallest residential tower on a US beachfront. Designed by famed architectural firm Sieger Suarez Architects (past projects include Residences by Armani/Casa and the Porsche Design Tower), the tower is being designed in accordance with the Florida Green Building Council certification to protect the local environment and minimize the impact on local wildlife. It will be designed to reduce energy consumption and use reduced lighting to protect endangered sea turtles. Each residence will have a private balcony, pool, sauna and an in-unit, multi-car garage for your beloved motor to be securely stored. The residences are scheduled for completion in 2026, with construction beginning in early 2023.

Contact bentleyresidencesmiami.com

1050 Bitterroot Court Idaho, USA

Tributary is an all-seasons, private club community in Driggs, Idaho. Found in the rolling foothills of the Grand Teton range and with direct access to the waterways of Teton Valley and Yellowstone National Park, it appeals to lovers of the great outdoors. The 1,500-acre community is rich in wildlife with ponds and wetlands (there's a two-mile elevated boardwalk for wildlife viewing) and a range of amenities: an 18-hole David McLay-Kidd designed golf course, a fitness center and spa, farm-to-table restaurant and bar, seven fishing ponds, ice-skating rink, members-only ski lounge at Grand Targhee Resort, and a seemingly endless choice of cross-country skiing and hiking trails. This four-bedroom abode with over 3,000 sq ft of space has a charming rustic decor with exposed brick walls and beamed ceilings. The floor-to-ceiling windows flood the generous living space with natural light and provide pretty views across the adjacent pond.

\$2.7m. Contact Jeff Heilbrun, director of real estate, jheilbrun@tributaryidaho.com, + 1 307 690 1508, tributaryidaho.com



Tributary is a private residential community in Idaho